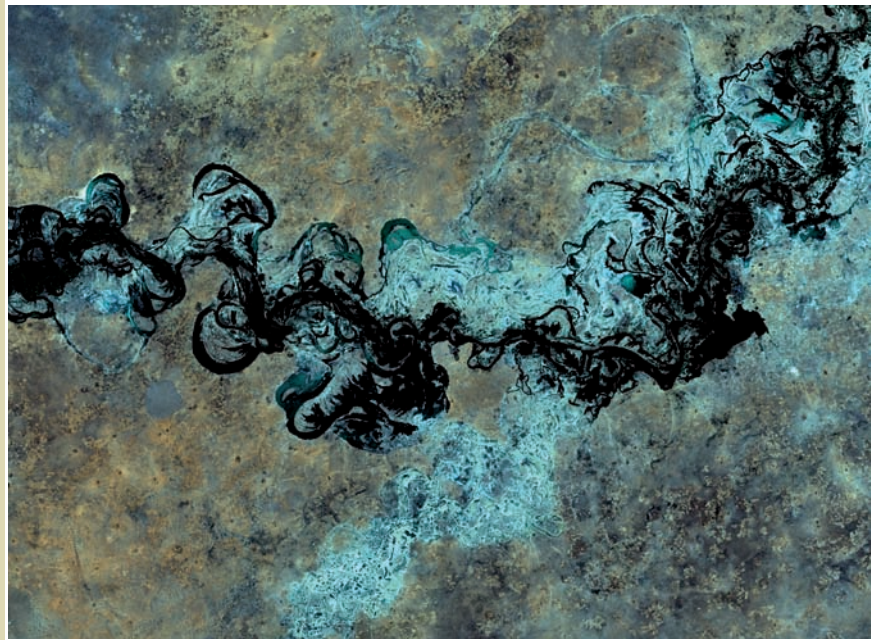


River Boundaries: Practicalities & Solutions

Monday 7 - Wednesday 9 July 2008

Durham University, United Kingdom



Tutors will include:

- Dr Robin Cleverly
United Kingdom Hydrographic Office
- Professor Nick Clifford
University of Nottingham, UK
- Ms Amy Hardberger
Environmental Defense Fund, USA
- Professor Richard Kyle Paisley
Global Transboundary International Waters Research Initiative, Canada
- Mr Carlos Alejandro Reyes Huerta
International Boundary & Water Commission, Mexico-Guatemala & Mexico-Belize
- Mr Guido Van Langenhove
Department of Water Affairs, Namibia

Introduction

Three quarters of the world's international boundaries follow rivers for at least part of their course. While the reasons for choosing rivers as boundaries are easily understood, river boundaries almost invariably generate a multitude of legal, technical and managerial challenges – for which no instruction book has yet been written. This unique course is designed to help boundary-makers and managers develop effective strategies for turning river boundaries into assets rather than a source of friction between the riparian states.

Led by expert tutors with practical experience of resolving problems associated with river boundaries, the workshop will cover issues such as: defining and demarcating river boundaries; identifying key river features such as the thalweg, the 'main channel' and the 'banks'; islands in boundary rivers; monitoring and accommodating physical changes in river boundaries; managing access and resource use in shared rivers; and resolving disputes over river boundaries. The workshop will combine instruction in the principles and practice of river boundary definition and management, detailed case studies and practical exercises.

Who should attend?

The workshop will be of particular value to:

- Diplomats
- Legal advisers
- Technical experts
- Border managers
- Geopolitical analysts
- Transboundary resource managers
- Consultants
- Hydrologists
- Cartographers

Tutors



Robin Cleverly joined the UKHO Law of the Sea Consultancy in 2003. He worked as an exploration geologist with BP for 18 years and in 1999 joined a consultancy firm specialising in satellite imagery and interpretation for the oil industry. He has provided technical advice on land, river and maritime boundaries including the analysis of petroleum resources and the application of modern satellite imagery. He has advised many governments over a wide range of boundary problems including Belize, Chile, Nigeria, Ukraine and recently in the ICJ case *Nicaragua vs Honduras*.



Nick Clifford is Professor of River Science at Nottingham University, UK. His current research interests include Fluvial and estuarine geomorphology, Hydrodynamic and morphodynamic modelling, River restoration and river management, Environmental instrumentation and specialist data acquisition, and the Statistical and numerical analysis of environmental data. He lectures on Earth & Environmental Dynamics, River Channel Forms & Dynamics, River Channel Dynamics, River Channel Management & Restoration, Coastal Forms & Processes and the History & Philosophy of Geography. He is also Associate Editor of the Journal of Hydrology.



John W. Donaldson joined the International Boundaries Research Unit as a Research Associate in 2003. Since that time he has conducted archive research and written on a variety of boundary issues and specific disputes. In 2006, he created the International River Boundaries Database and has collected information on over 1100 river boundary sections worldwide. Currently undertaking PhD research on local boundary demarcation in southern Africa after obtaining an MA in International Boundaries from Durham University.



Amy Hardberger is an attorney with the Texas office of Environmental Defence Fund. She works with the Climate and Air Program and the Land, Water & Wildlife Program on Texas law and policy issues. She has an MSc in Geology from the University of Texas at San Antonio, and a doctorate from Texas Tech University School of Law. Having worked as an environmental consultant, her research focuses on transboundary river and groundwater issues, the human right to water, and advanced municipal water conservation.



Richard Kyle Paisley is Director of the Global Transboundary International Waters Research Initiative, Institute of Asian Research, Faculty of Graduate Studies, University of British Columbia, Vancouver, Canada. His current research, teaching and legal practice interests are predominantly in the area of international water law and policy, negotiation and environmental conflict resolution. He has published extensively and been an advisor on these subjects to organisations worldwide.



Alejandro Reyes H has been the legal adviser in the Mexican section of the Mexico-Guatemala and Mexico-Belize International Boundary and Water Commissions since 1994. He also served as legal adviser in the 1996 Mexican delegation to the Sixth Committee of the United Nations General Assembly during the study and drafting of the Convention on the Law of the Non-Navigational Uses of International Watercourses. He has shared the Mexican experience of boundary-making and management with the governments of El Salvador and Colombia.



Guido Van Langenhove is the Head of the Namibian Hydrological Services. He was a member of the joint commission for the delineation and demarcation of the boundary between Botswana and Namibia along the Kwando/Linyanti/Chobe River. He was co-leader of the technical team that carried out the field investigations to determine the main channel and its thalweg in an area of ephemeral and dried out wetlands stretching over some 350 km. Mr Van Langenhove has more than 30 years of experience in river hydraulics and operational hydrology.

Programme

Monday 7 July	0900-0945	Introduction
	0945-1045	River systems and their complexity <ul style="list-style-type: none"> • The fluvial system • The river continuum • Channel dynamics • The significance of timescales
	1115-1245	Legal principles in river boundary definition <ul style="list-style-type: none"> • Boundaries in navigable and non-navigable rivers • Alterations in the course of boundary rivers • Islands in boundary rivers • Case law relating to river boundaries
	1245-1345	<i>Lunch</i>
	1345-1500	Interpreting terms used in river boundary definition <ul style="list-style-type: none"> • Thalweg • Median line • Main channel • Source • Bank • Confluence
	1500-1545	The use of remotely-sensed imagery in analysing river boundaries <ul style="list-style-type: none"> • Types of imagery • Applications • Case studies
	1615-1700	Practical exercise Working with maps and other geographical data, participants will attempt to identify the alignment of a number of river boundaries

Tuesday 8 July	0900-1000	River mouths and the land/sea interface <ul style="list-style-type: none"> • The law of the sea and river mouths • Identifying the mouth of a river • Unstable river mouths and maritime boundaries
	1000-1100	State practice in river boundary delimitation, demarcation and dispute resolution
	1100-1300	The utilisation of waters in boundary rivers <ul style="list-style-type: none"> • Navigational and non-navigational uses and rules • Rights and responsibilities of upstream and downstream states • Rio Grande case study
	1300-1400	<i>Lunch</i>
	1400-1700	Practical exercise Working in teams, participants will seek to agree an equitable river boundary regime between two fictional states
	1900	<i>Workshop dinner at Durham Castle</i>

Wednesday 9 July	0900-1015	Case study: the delimitation of the Botswana-Namibia boundary in the Chobe river
	1015-1100	Managing river boundaries: the role of boundary commissions <ul style="list-style-type: none"> • From demarcation to management: the evolving role of boundary commissions • Bilateral commissions • Multilateral commissions
	0945-1100	Case study: the work of the Belize-Mexico and Guatemala-Mexico International Commissions of Borders and Waters
	1245-1300	Closing discussion and wrap-up
	1300	<i>Lunch</i>

Cover picture:

Satellite imagery reveals the complex geomorphology of the Komadugu Yobe river which forms part of the boundary between Nigeria and Niger (Landsat ETM+image, 2000. Source: Global Land Cover Facility).

What will it cost?

The cost of the workshop will be £1,395 per participant. Fees for UK-based participants are normally subject to Value Added Tax (VAT) of 17.5%. We regret that payment can only be accepted in £ sterling. However, we are able to accept payment by major credit and debit cards. Full payment MUST be received by Friday 13 June to guarantee the booking.

In addition to tuition and all course materials, the fees cover the following:

- accommodation in a single en-suite room at Collingwood College for the nights 6-8 July
- evening dinner on 6-8 July
- lunch and refreshment breaks on 7-9 July.



Durham Castle - previously the chief residence of the Bishops of Durham, part of Durham's World Heritage Site and the venue for the IBRU workshop dinner.

How to book

Places are limited and IBRU workshops are frequently oversubscribed. Please use the following procedure to book a place:

- 1 Contact Astrid Alvarez at IBRU to confirm whether a place is still available.
- 2 Once confirmed, please complete an online booking form at www.durham.ac.uk/workshops/booking or request a hard copy from IBRU.
- 3 Acknowledgement of the provisional booking will be sent by email (or letter) with information on how to pay.
- 4 If payment is not received by Friday 13 June, the provisional booking cannot be guaranteed and the place will be released. The original booking will be transferred to a waiting list; the place can only be confirmed when full payment is received, if a place is still available.

Other administrative information

Venue

Workshop accommodation and teaching will be based at Collingwood College, which is part of Durham University, approximately 20 minutes walk from the City centre.

Language

Teaching and workshop materials will be in English. We regret that we are unable to provide translation or interpreting services.

Cancellation

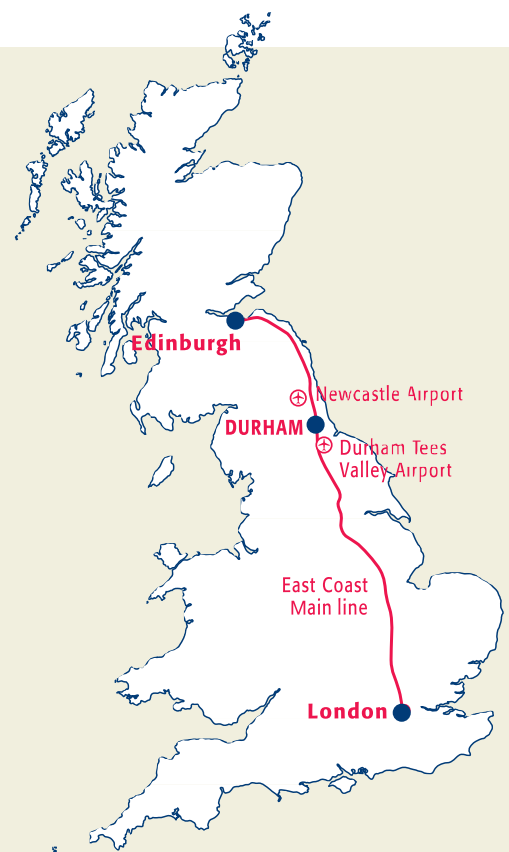
Cancellations must be received in writing not later than Friday 20 June 2008, and will be subject to a £50 cancellation fee, unless a substitute participant is offered. After this date the full registration fee will apply. Substitutions for registered participants may be made at any time, but we would greatly appreciate prior notification.

Programme changes

IBRU reserves the right to modify the programme as may be necessary without notice to participants.

Travel to Durham

Full details of the venue, plus maps and travel information will be sent to all participants following registration.



Further information

If you have any questions about the workshop please contact Ms Astrid Alvarez, Director of External Relations and Business Development, International Boundaries Research Unit, Department of Geography, Durham University, DH1 3LE, United Kingdom
Tel: +44(0)191 334 1965 Fax: +44(0)191 334 1962
Email: ibru-events@durham.ac.uk
www.durham.ac.uk/ibru/workshops



www.durham.ac.uk/ibru